

Figure 1. ADCP sw30, HOPS run in Jul10/PJH0/, (upper 2 panels): z8m, (bottom 2 panels): z68m.

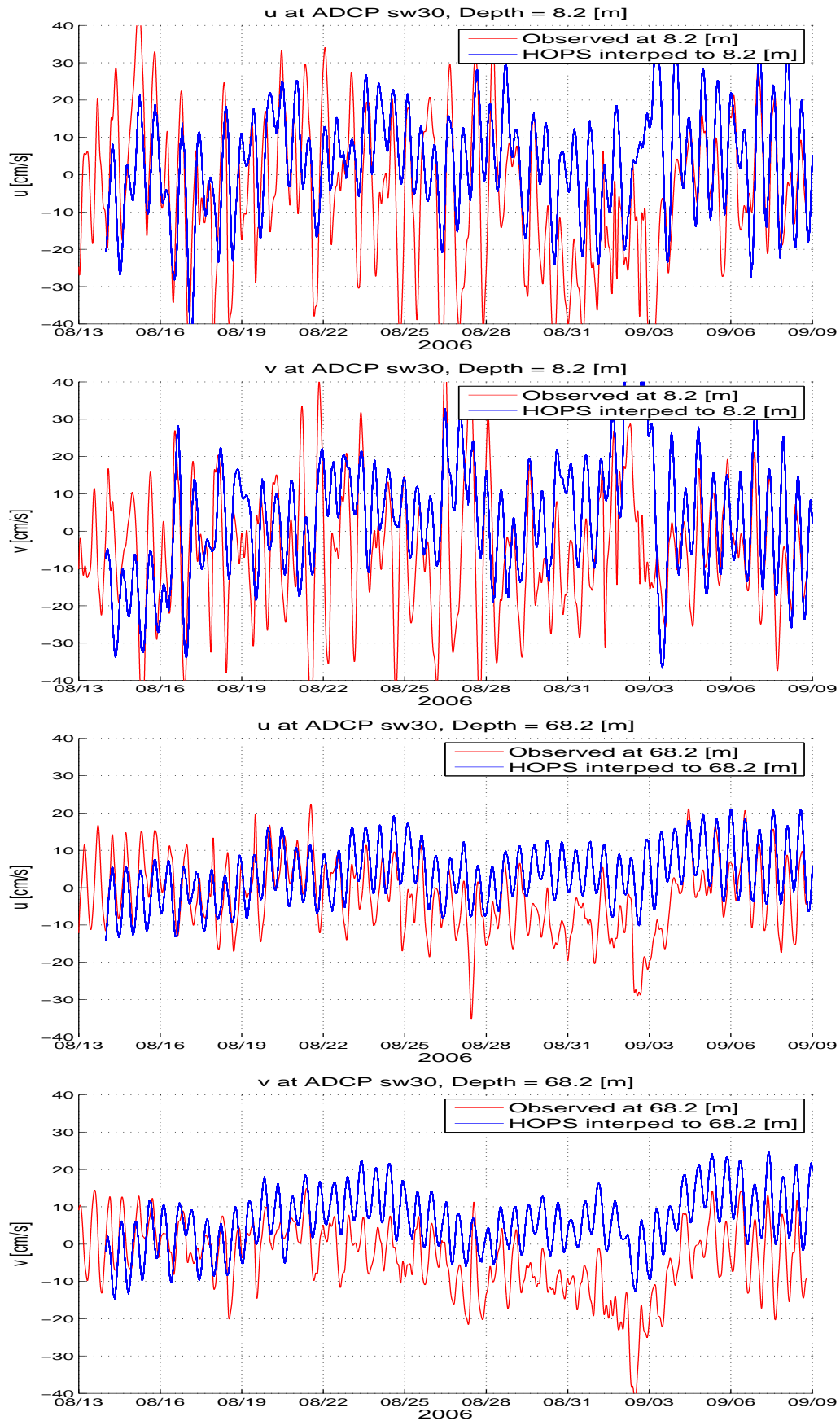


Figure 2. ADCP sw30, HOPS run in Jul10/PJH1/, (upper 2 panels): z8m, (bottom 2 panels): z68m.

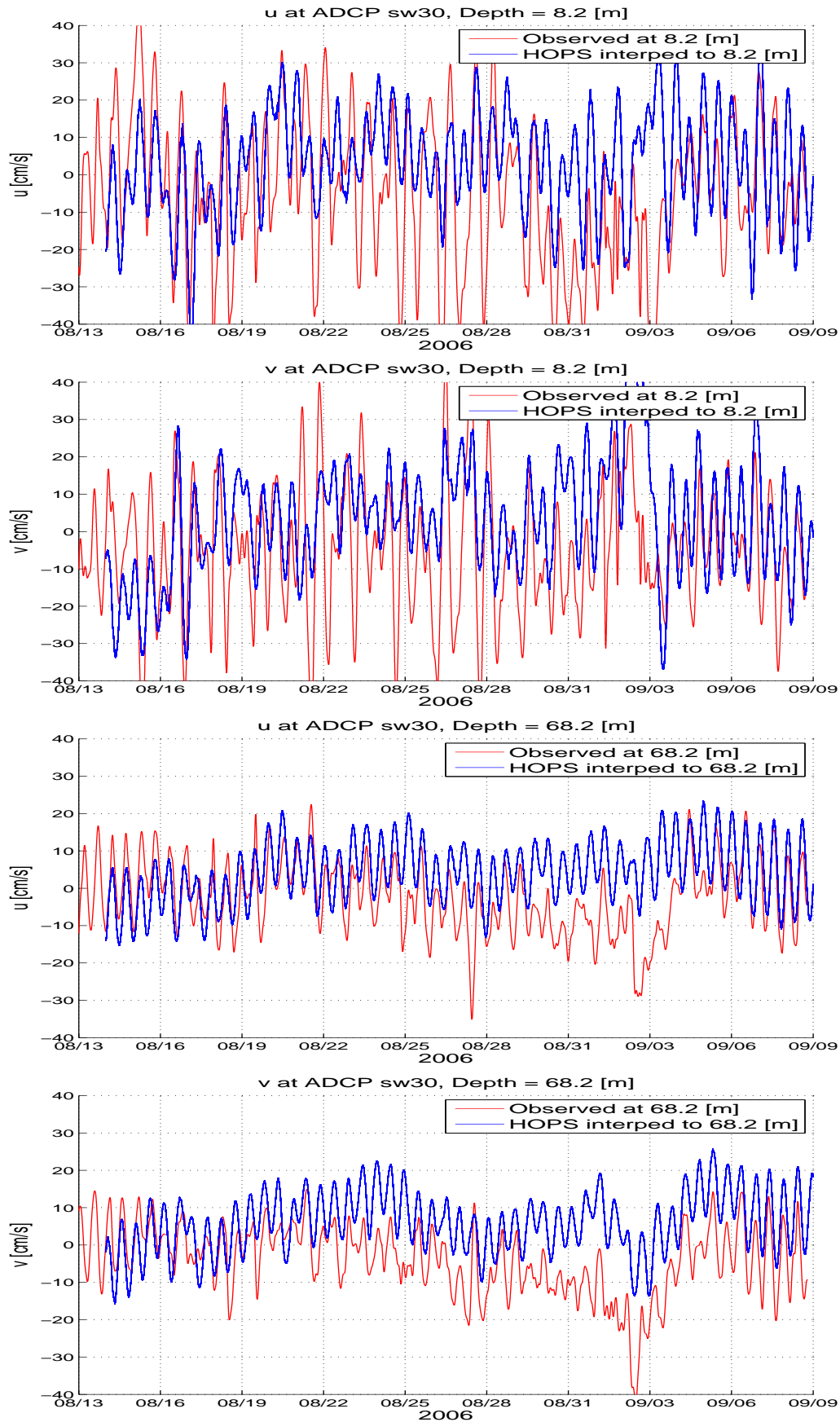


Figure 3. ADCP sw30, HOPS run in Jul10/PJH2/, (upper 2 panels): z8m, (bottom 2 panels): z68m.

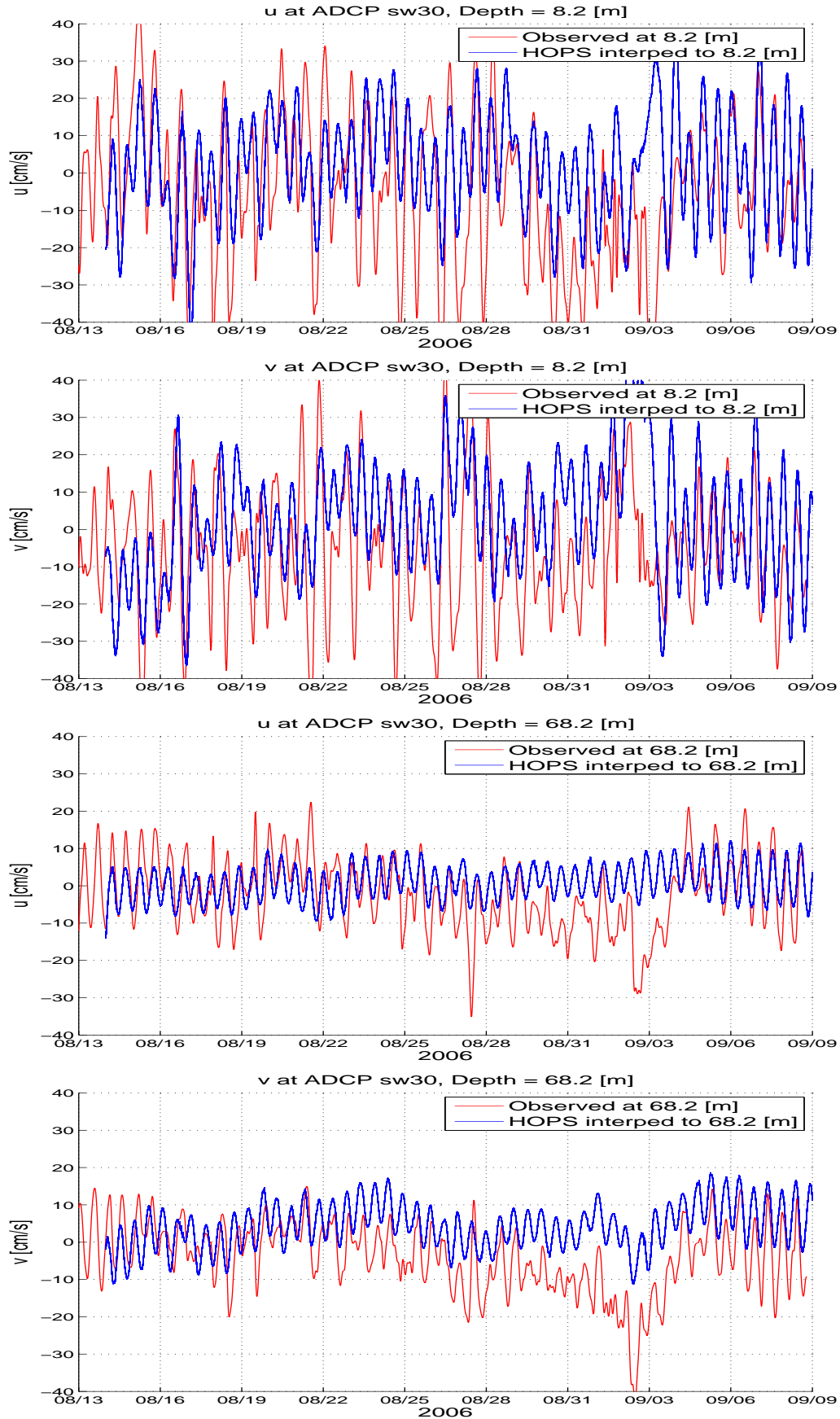


Figure 4. ADCP sw30, HOPS run in Jul10/PJH3/, (upper 2 panels): z8m, (bottom 2 panels): z68m.

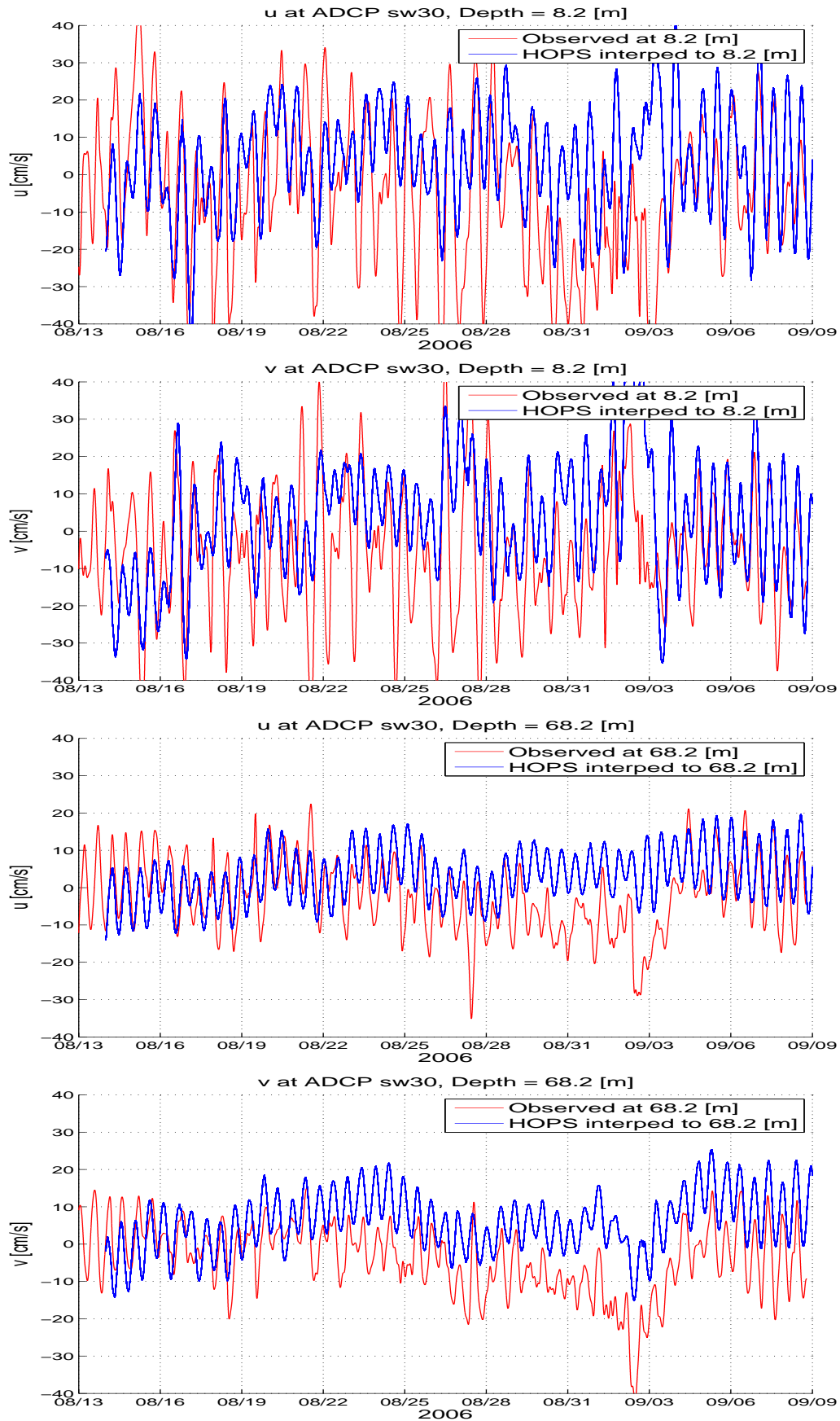


Figure 5. ADCP sw30, HOPS run in Jul10/PJH4/, (upper 2 panels): z8m, (bottom 2 panels): z68m.

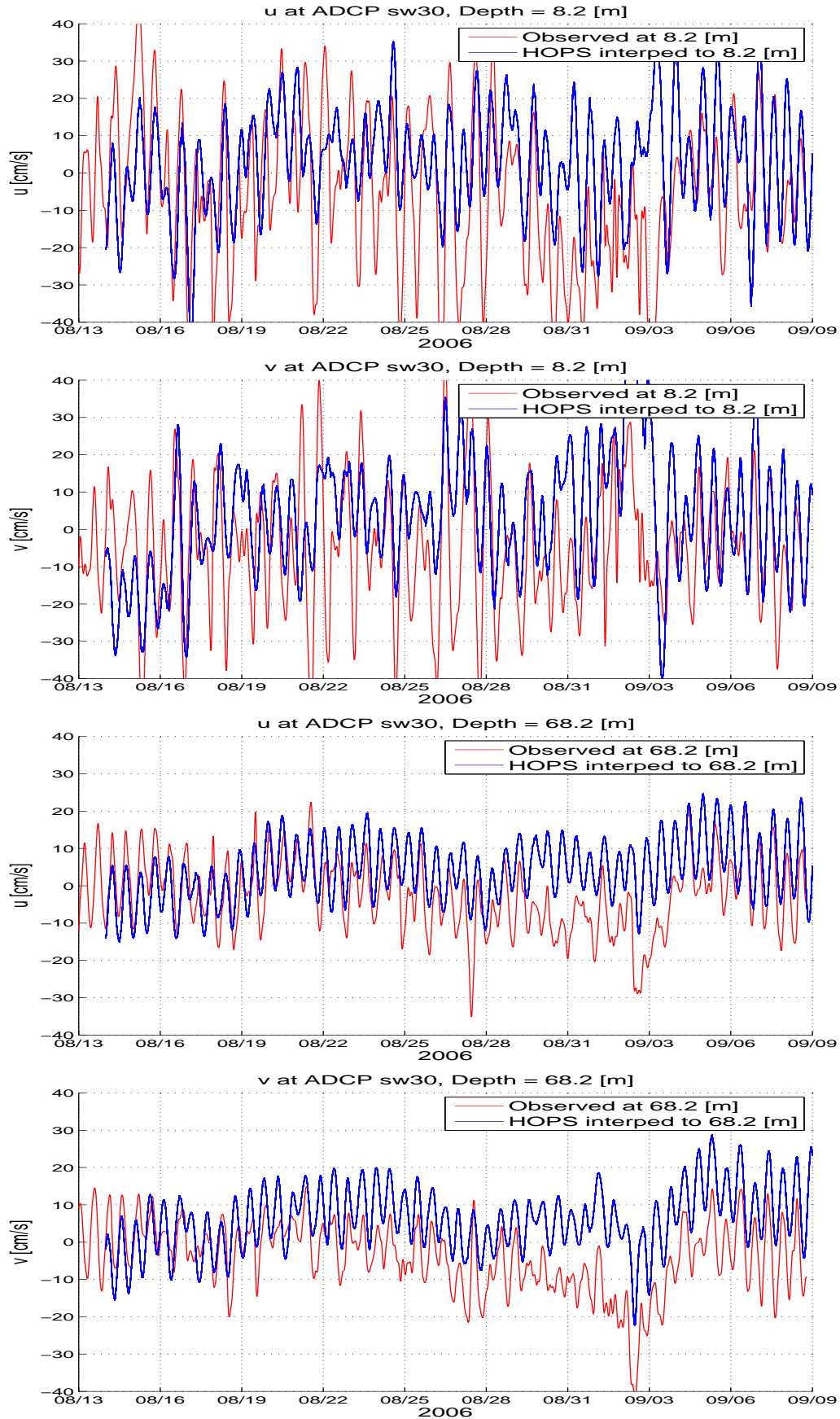


Figure 6. ADCP sw30, HOPS run in Jul10/PJH5/, (upper 2 panels): z8m, (bottom 2 panels): z68m.

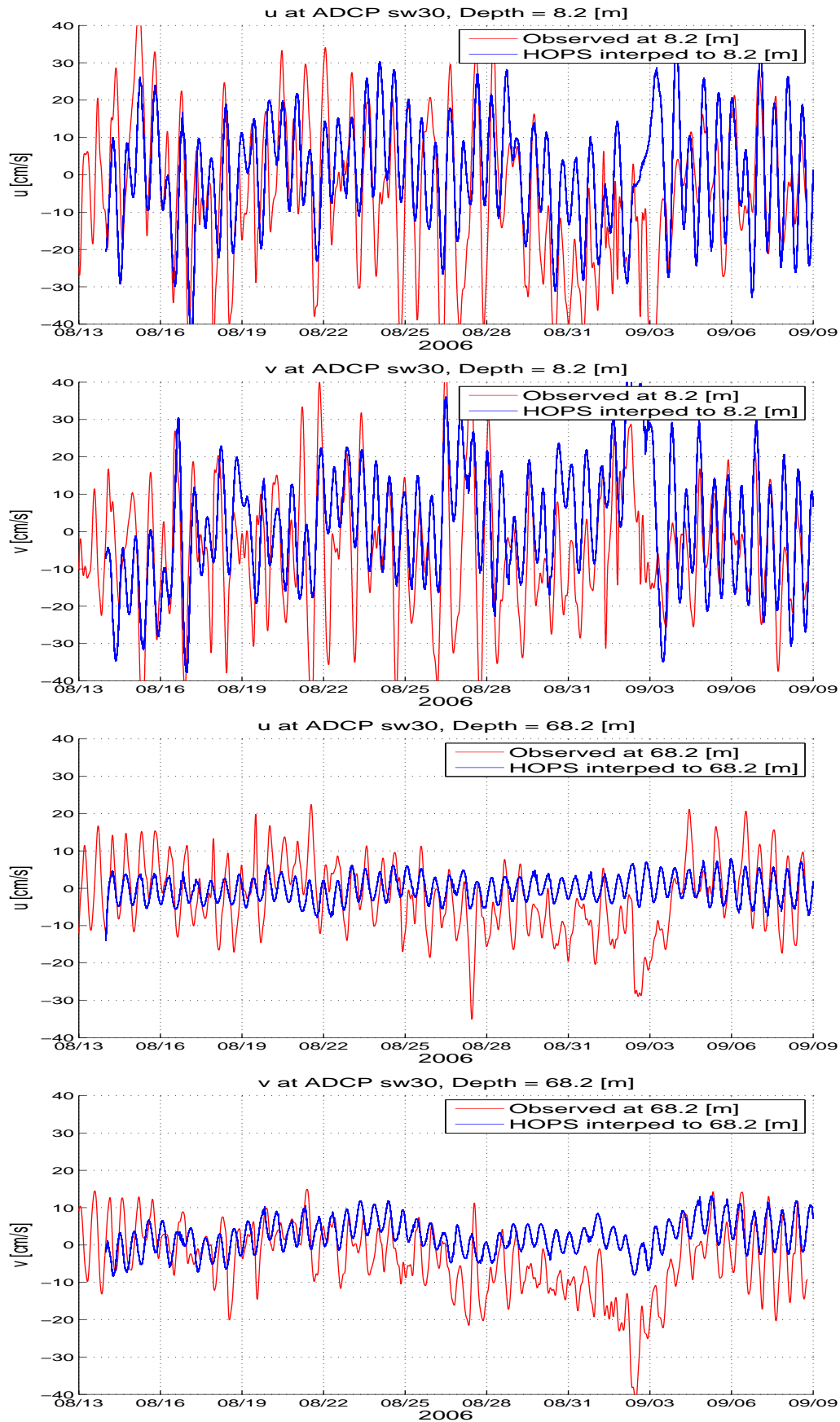


Figure 7. ADCP sw30, HOPS run in Jul10/PJH6/, (upper 2 panels): z8m, (bottom 2 panels): z68m.

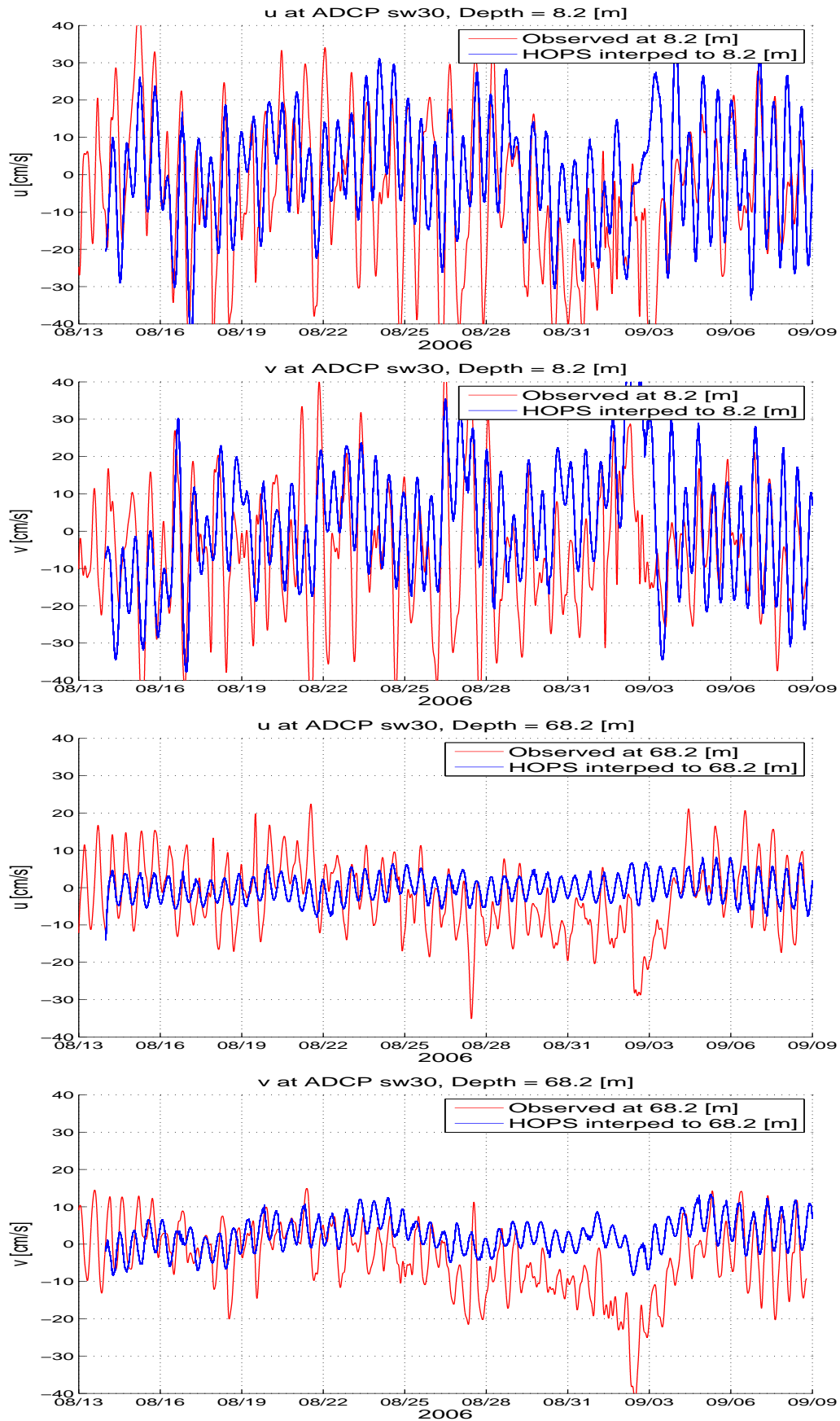


Figure 8. ADCP sw30, HOPS run in Jul10/PJH7/, (upper 2 panels): z8m, (bottom 2 panels): z68m.



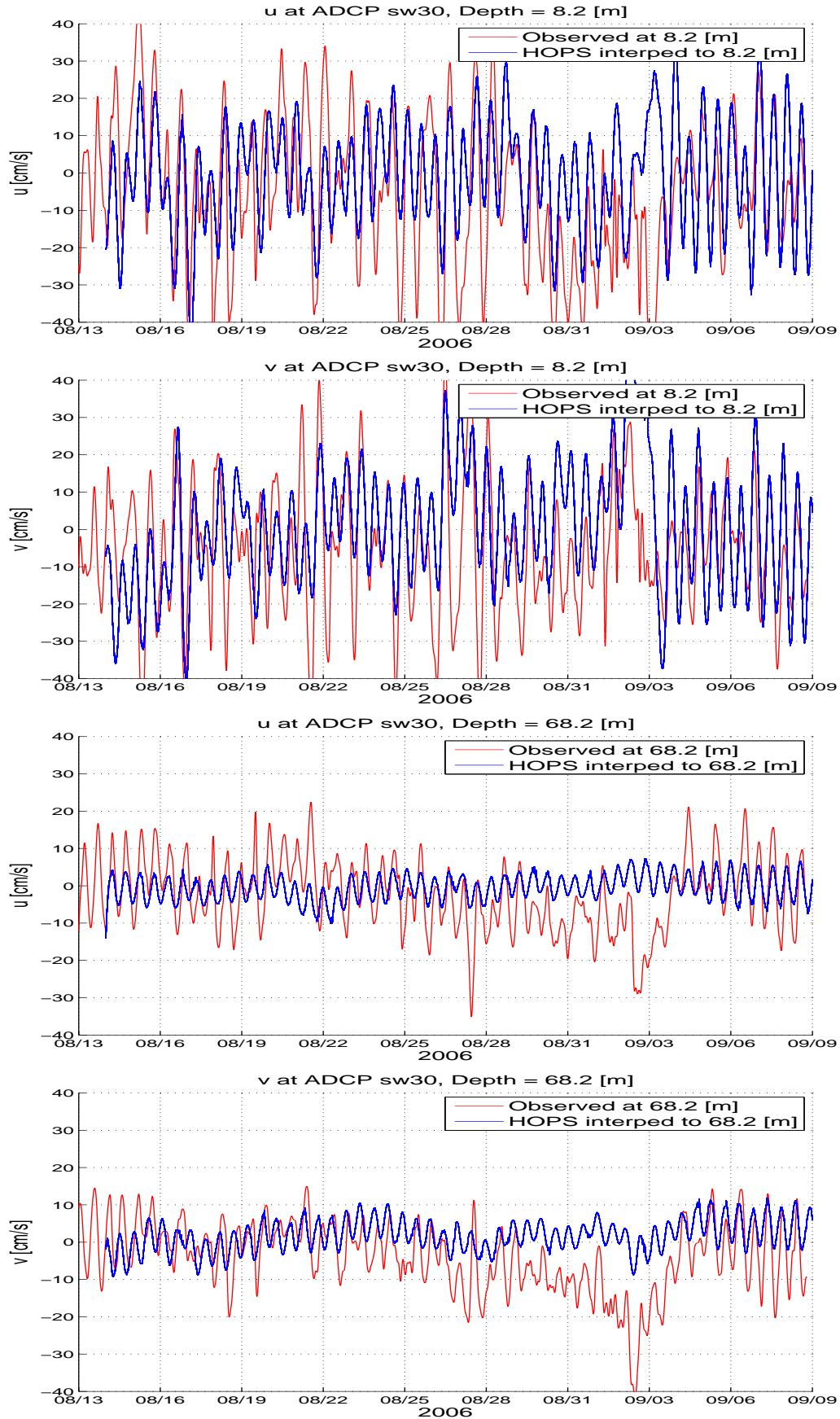


Figure 9. ADCP sw30, HOPS run in Jul10/PJH8/, (upper 2 panels): z8m, (bottom 2 panels): z68m.

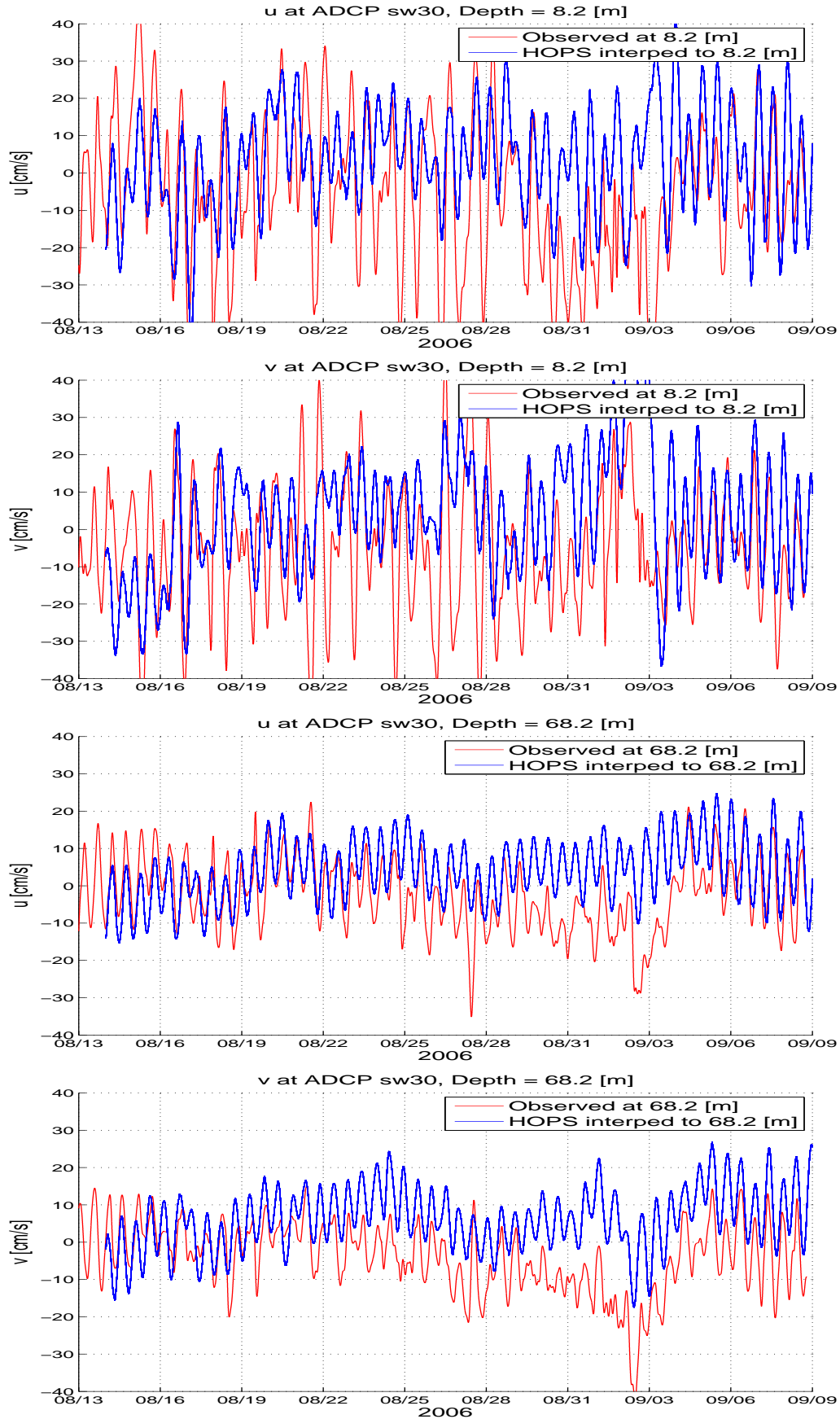


Figure 10. ADCP sw30, HOPS run in Jul10/PJH9/, (upper 2 panels): z8m, (bottom 2 panels): z68m.

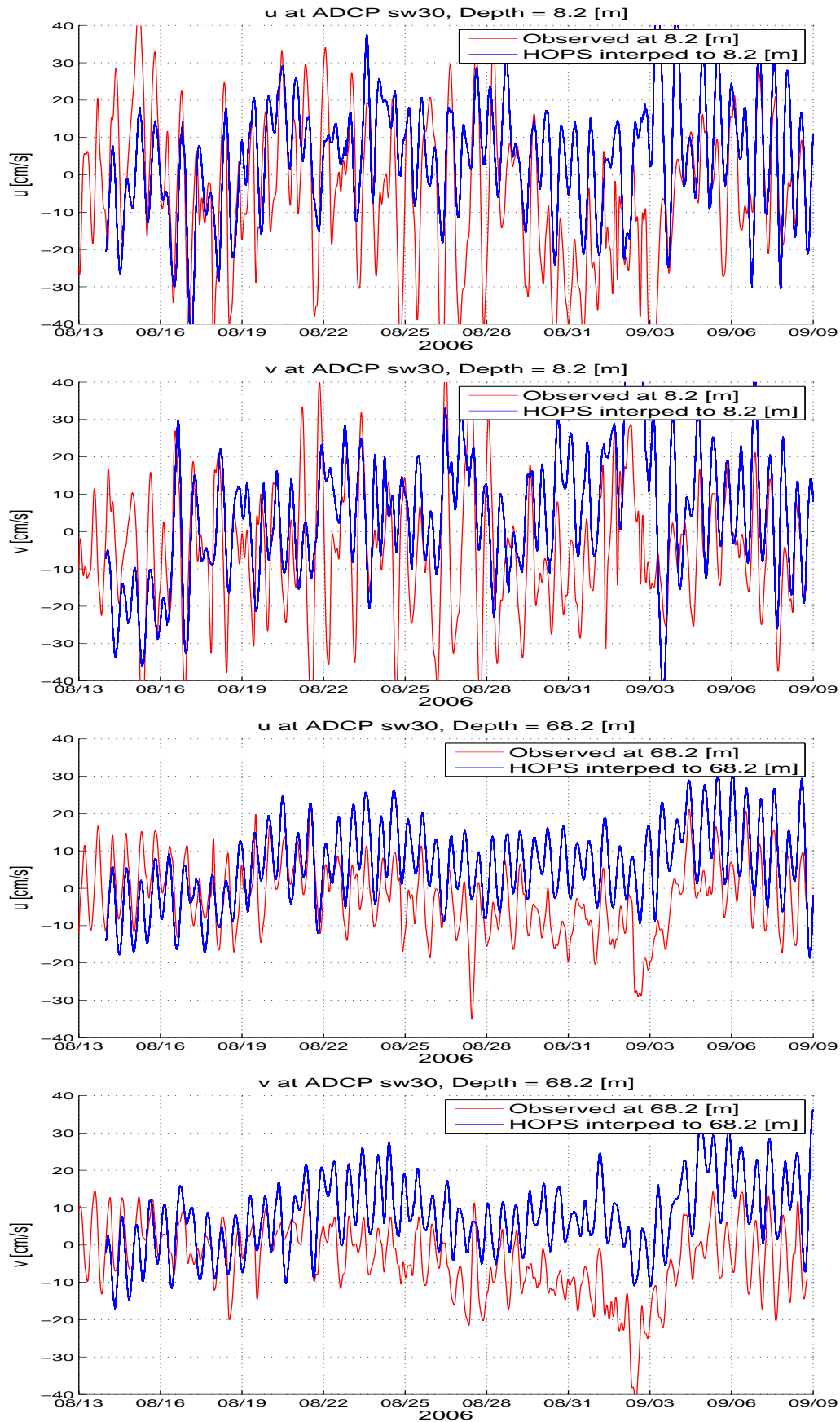


Figure 11. ADCP sw30, HOPS run in Jul10/PJH10/, (upper 2 panels): z8m, (bottom 2 panels): z68m.

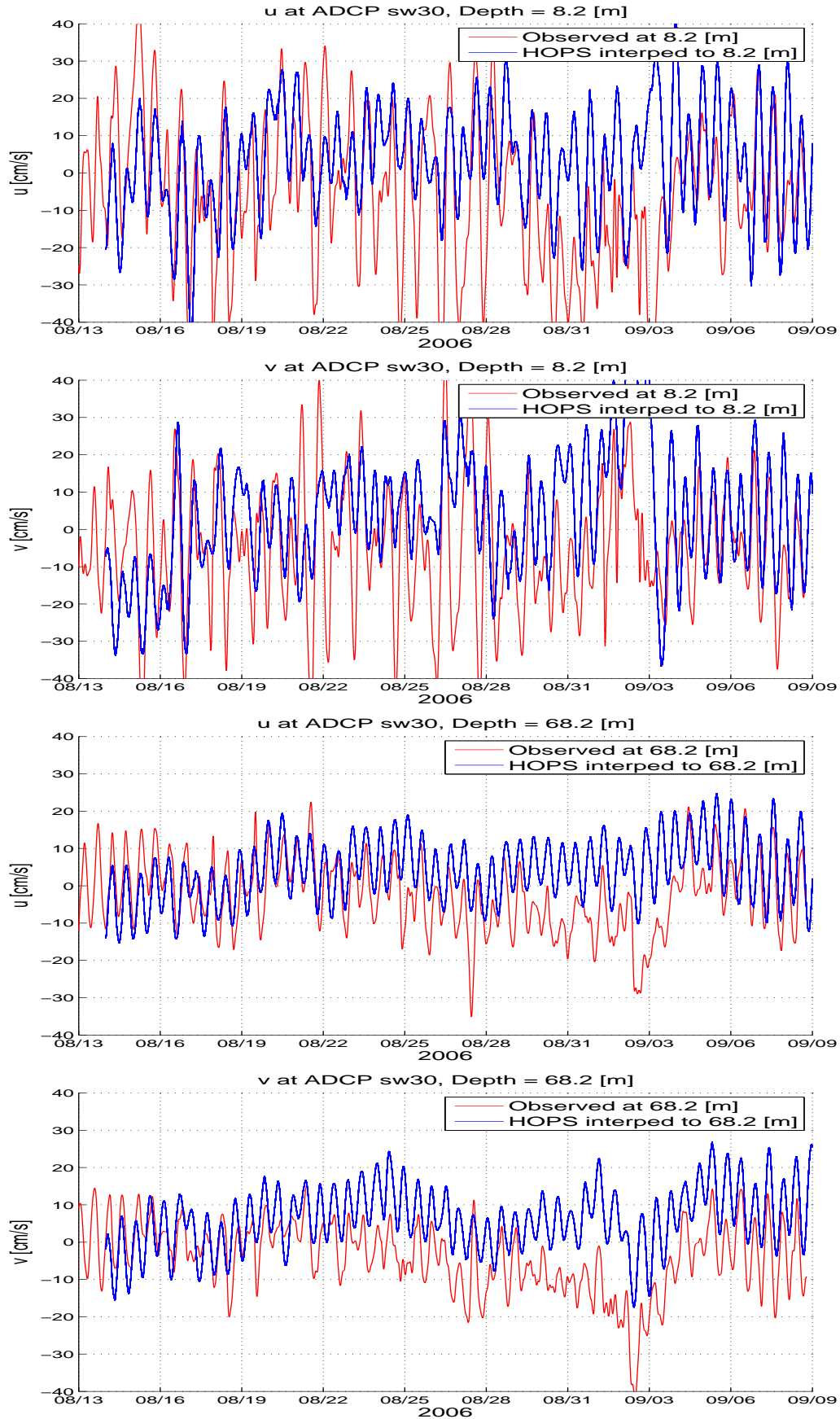


Figure 12. ADCP sw30, HOPS run in Jul10/PJH11/, (upper 2 panels): z8m, (bottom 2 panels): z68m.